

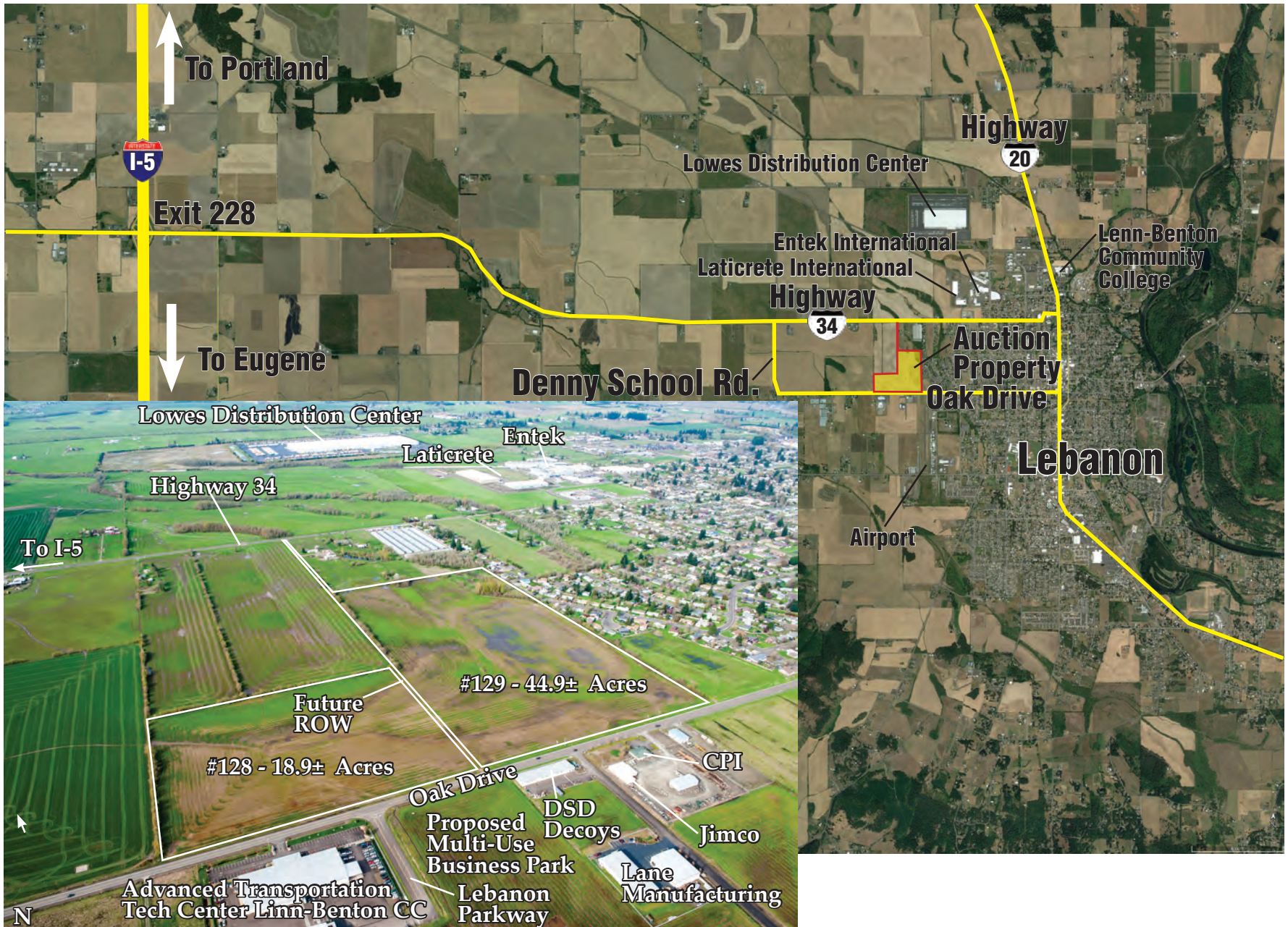


# FALL 2017 AUCTION

*No Starting Bids and No Hidden Reserves!*

**PRICE REDUCTIONS TO \$6,005 PER ACRE!**

**63.8 ACRES OF LAND WITH INDUSTRIAL ZONING AT FARMLAND PRICES - CURRENTLY LEASED FOR GRASS SEED**  
**Lebanon, Oregon**



- One of the largest tracts of land zoned industrial with excellent access to Highway 34 and I-5
- Available in bulk, or in two parcels of 18.9± and 44.9± acres - both with frontage on Oak Avenue, near Linn-Benton Community College, Advanced Transportation Technology Center, Lane Manufacturing Company, DSD Decoys USA, Jimco Electrical Contracting, and Consumers Power
- Special Seller financing available with 30% down payment

**#128 - 18.9± ACRES - PUBLISHED RESERVE \$113,500\* / LAST ASKING \$295,000**

**#129 - 44.9± ACRES - PUBLISHED RESERVE \$270,000\* / LAST ASKING \$500,000**

*\*Sales of Auction Properties 128 and 129 are subject to total bids in the aggregate to equal, or exceed, the Bulk Published Reserve Price of \$383,500 / \$6,010 per acre*

**SEALED BIDS DUE NOVEMBER 15, 2017**

*Seller Financing Available • Broker Cooperation Invited*

**CALL NOW FOR FREE COLOR CATALOG #1704  
and Bid Package #128 and #129**

**1-800-845-3524**

Auction conducted by:

**REALTY MARKETING/NORTHWEST, Broker**  
522 SW Fifth Avenue, Suite 725 - Portland, Oregon 97204